

A parent and carer guide to SEND support in school



ALL CAN ACHIEVE

Rockmount Primary School
Chevening Road
Upper Norwood
SE19 3ST

Phone: 0208 653 2619

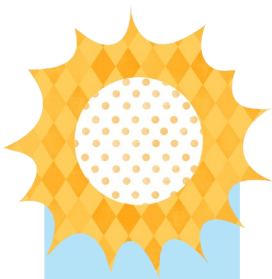
Email: office@rockmount.croydon.sch.uk

SENCOs: Hayley Gorman
Amber Pearless

Information inside

- What is SEND?
- What is the SEND Code of Practice?
- What is a school's SEND Information Report?
- What support is available in school?
- What is SEN support?
- What is an EHCP?





What does SEND mean?

SEND stands for Special Educational Needs and Disabilities. Children with SEND often have a difficulty in at least one of the following four areas:

- Communication and Interaction
- Cognition and Learning
- Social, Emotional Wellbeing and Mental Health
- Sensory and/or Physical needs

All children with SEND are different. Some children have complex needs and some have only a small need for a limited period of time. Some children may have a diagnosis and others may not.

What is the SEND Code of Practice?

The SEND Code of Practice is a legal document that sets out the duties for those who work with children with any type of special educational needs and provides information on what families can expect in the way of support for their child. It covers children and young people from birth to age 25. It can be found [here](#).

There is also a simplified parent and carer friendly guide available as the full document is very long. It can be found [here](#).

What is a school's SEND Information Report?

All schools are required to produce a SEND Information Report listing the support the school can offer. You can find the Information Report for Rockmount Primary School [here](#).



What support is available in school?

Our quality first teaching and the usual classroom provision for all children can often be adjusted to meet the needs of pupils with SEND through effective differentiation or additional resources.

What is SEN Support?

SEN Support is a term used to describe the support offered to children in mainstream schools who need additional provision to enable them to make progress.

Children who are on SEN Support have been identified by their parents/carers and the school as having difficulties in at least one of the four main areas: Communication and Interaction, Cognition and Learning, Social, Emotional Wellbeing and Mental Health or Sensory and/or Physical needs.

Children on SEN Support will find their needs are generally met through targeted interventions. Interventions can be on a one to one basis or within small groups. All schools offer a range of different interventions according to pupil needs. Children who are having SEN Support will be added to our inclusion register for the duration of time that they are receiving support. Your child's class teacher will inform you prior to adding your child to the inclusion register.

All schools have a Special Educational Needs Co-ordinator (SENCo) who is responsible for identifying children who need support, ensuring the correct interventions are in place and monitoring progress to ensure children's needs are met. Schools can provide additional resources, specific interventions and may also arrange specialist training for staff.

Locality SEND Support (LSS)

Rockmount is part of an initiative by Croydon Council called the Locality SEND Support (LSS) which aims to improve support for children who live in Croydon and have special needs or disabilities.

Along with several other schools in our local area, we are able to apply for additional funding to provide earlier and better targeted help to support those with SEND. This partnership also gives us the opportunity to work closely with our local schools to get the necessary help and support for children who are unable to have their needs met through our quality first teaching and therefore require further intervention.

This early help may be in the form of advice, school to school support, referral to specialist services or additional services which can be put into place quicker due to the set up of the LSS if support is granted.



What is an EHCP?

A small number of children will have an EHCP. An EHCP is an Education Health and Care plan. These are for those children with complex needs who will need more support to stay in a mainstream school or who may need to attend a special school. If your child's school feels they cannot meet your child's needs on SEN Support, they may discuss with you whether your child would benefit from an EHCP.

There are some helpful organisations that can be contacted to help you and your child. There are lots of them listed on the school website as well as Croydon's Local Offer site. Below are a few that may be helpful.

CROYDON LOCAL OFFER

<https://localoffer.croydon.gov.uk/kb5/croydon/directory/home.page>

CROYDON SENDIASS are available to support you in school meetings and to act as an impartial person in making sure schools and parents/carers can work together effectively to support a child.

<https://www.kids.org.uk/croydon-sendiass>

Other ways to get in touch with Croydon SEND

Phone: 020 8726 6400

Calls are answered between 9am and 4pm Monday to Friday. Outside of these hours there is an answerphone in operation.

Address: SEND Department, 2nd Floor, Bernard Weatherill House, 8 Mint Walk, Croydon, CR0 1EA

CROYDON PARENT CARER FORUM A parent carer forum is a group of parents and carers of disabled children. Their aim to make sure the services in this area meet the needs of disabled children and their families.

<https://www.croydonparentcarerforum.org.uk/about-cpcf>

Contacting the Croydon SEND department by email

For questions about EHC Plans, policies, schools and settings, or individuals, send an email to SENEquiries@croydon.gov.uk (if you are asking about a specific child or young person, include their date of birth, school and year)

